



Meet the Teacher

Year 2

Thursday the 8th of
September 2011



Teachers and Educational Assistants



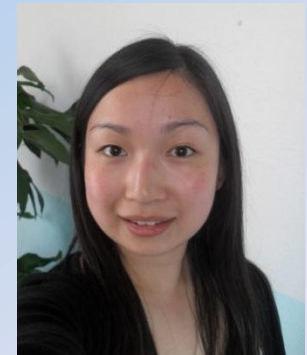
**2J – Ms Emily Jeves
Miss Megan Lau**



**2K – Mrs Alison Kutrzyk
Miss Deirdre Chaves**



**2S – Mrs Faride Shroff
Mrs Liza Turner**



**SEN/LSC – Mrs Rosie Fletcher
Miss Catherine Ho**

Other Teachers your child may encounter

Vice Principal (responsible for Years 1-2)

& ICT Co-ordinator - Mr James Harrison

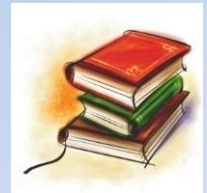


MUSIC - Mr Scott Gibson

ICT Teacher – Mr Stuart Lowe

MANDARIN – 3 Pathways

Ms Lynn Xu, Miss Pu Xu, Ms Xiao Bing Yu



P.E. - Mr Tim Teahan

S.E.N. / L.S.C. Co-ordinator - Belinda McLaughlin

P.M.P. Teacher – Mrs Skye Evers

Daily Routine

8.30am – BHS opens and playground is supervised

8.45am – Children collected from playground REGISTER

10.30am – **BREAK** Children eat snack on playground

10.50am – Children return to classrooms

12.45pm – **LUNCH** Children eat in class

1.05pm – Children go to the playground

1.30pm – Children return to classrooms

2.55pm – Children prepare to leave

3.00pm – BHS ends for the day





Healthy Eating



BREAKFAST – the most important meal of the day

SNACK – healthy snack with a small treat

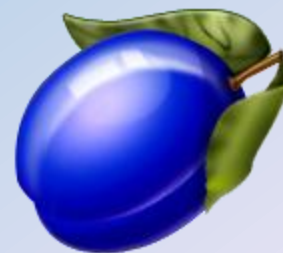


LUNCH – something substantial, not sweet



Please discuss the food provided with your child to ensure they like it.

WATER, WATER, WATER!



Equipment

- School back pack
- Correct BHS uniform
- Water bottle
- 1 BHS book bag (\$60)
 - Diary/Home reading/Spelling Practise Book
/Library books
- Healthy snack & lunch
(in separate named containers)
- School sun hat

Please ensure everything is clearly named!



Curriculum

BHS is a PYP school. Over the course of a year the children will undertake 6 Units of Inquiry (U.O.I.)

Who we are:

Healthy Lifestyles

How we express ourselves:

Expressing feelings

Where we are in time and place:

Journeys

How we organise ourselves:

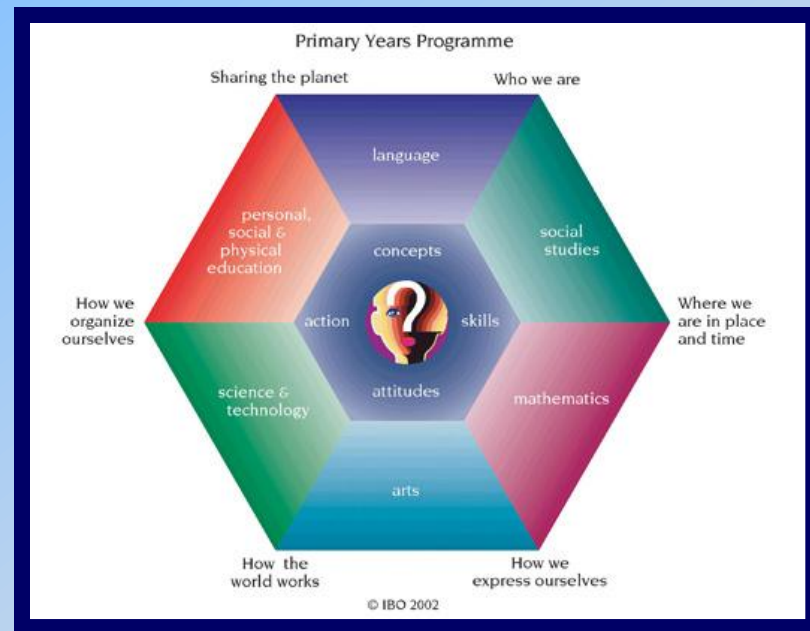
Transport Systems

How we share the planet:

Caring for our Environment

How the world works:

Materials and their uses



Curriculum

Units of Inquiry can encompass many different curriculum areas like;-

Science, English, Maths, ICT, Geography, History, Mandarin, Art, Music, P.E., Drama and PSHE.

P.E. – 2 x P.M.P. (Perceptual Motor Programme)
2 x P.E. - teaching a range of games and small apparatus skills.

Mandarin – 3 x 45 minute lessons per week (Pathways)

Music – 1 x 45 minute lesson per week

Learning Centre – 1 x 45 minute lesson per week

ICT – 1 x 45 minute lesson per week



Special Educational Needs at Beacon Hill School

- Inclusive school - All students are encouraged to participate in all school related activities to their best ability
- There are some students in each year group who are supported by the Learning Support Team
- SEN department works with each year level in identifying students and providing support structures for children with learning, cognitive and/or behavioural challenges
- Booster programs for children who for a variety of reasons may benefit from repeated learning or consolidation of basic skills whilst working in a small group
- Any questions please contact Head of Special Educational Needs:
Belinda McLaughlin belinda.mclaughlin@bhs.edu.hk

News of the 2's

Emailed
every Friday

News Of The Twos

General Information

Term 1 2nd September 2011

A few reminders.....

- It is very important that your child is developing independence. Year 2 children need to pack their own school bag and be able to open their lunch themselves.
- We do encourage the children to have healthy snacks and lunch. Please make sure that your child has a balance of sweet and savoury items to eat.
- Your child needs a sun hat and water bottle in school every day, these need to be labelled.
- Reading Diaries have arrived! Hooray! Your child will bring home their new Reading Diary on Friday. Please continue to read with them, write a comment and sign the assigned section.

Unit of Inquiry/English

Next week we will be continuing our first unit of inquiry. Our central idea is:

Lifestyle choices can affect human health.

We will be involved in various "tuning in" activities. The children will be asked to work in a team to create a healthy snack using their favourite fruits.

We will be talking and reading about sleep. The children will be finding out how much sleep we need and why our bodies need sleep.



What have we been doing in Year 2?

We have been talking about how we can maintain a healthy lifestyle by choosing to eat lots of fruit and vegetables, drinking plenty of water and having breaks to play throughout the day.



Mathematics

Next week we will be inquiring into place value.

We will be talking about digits holding a place within a number and this place tells us the value.

We will be continuing to look at patterns in our number system and how numbers are connected. We will be using language such as units (ones), tens and hundreds.

Things to do at home

- Home reading— every day for about 15 minutes. Remember to ask your child to read, retell and then talk about the book.
- The children will be receiving their Mathematics log in and password during the coming week. The children will be able to access their account from home and school.

Daily 7

Your child received a copy of the publication The Daily 7 this week. You can subscribe to this publication.



Dates for your Diary

You will have received a timetable from your child's class teacher showing when specialist lessons happen.

Learning Centre borrowing days:
2S— Thursday 2J—Monday 2K— Tuesday

Looking ahead:

PMP starts Week of 5th September 2011

Meet the Teacher 8th September 2011

Reading Workshop for parents and helpers new to school 14th September 2011

School Photos 15th and 16th September 2011



Home Reading

- **The aim of Home Reading** at BHS is to provide an opportunity to practise essential reading skills. We believe that success in reading results from partnerships between students, parents and teachers. The Home Reading Programme has been carefully devised to enable students to succeed in reading.
- **The Home Reading Diary**
- **Target Setting**
- Home reading is for fluency development and comprehension **not** quick progression to higher levels.
- **The Process**
- **Frequency of changing**
- Daily
- Please sign and comment on your child's reading. Children will be unable to borrow again unless signed.

As with other home learning tasks, teachers keep records of the frequency of your child's borrowing.

Maths and English

Maths and **English** are taught daily and links are made to U.O.I.s, where possible.

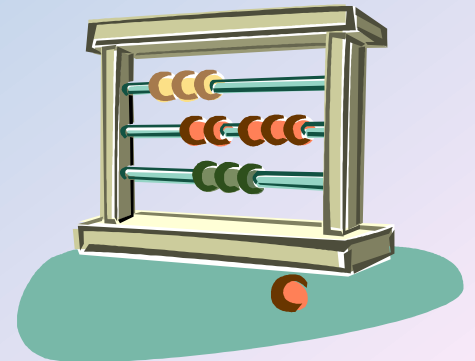
English - Guided Reading

- Individual reading
- Journal Writing
- Text types
- Phonics (Synthetic Phonics)
- Grammar/Punctuation/Spelling
- Handwriting



Maths - Number

- Shape, space and measure
- Data Handling
- Problem solving



Classroom Organisation

Throughout the year your child will have the opportunity to work in a variety of different groupings;-

- INDIVIDUALLY
- PAIRS
- MIXED ABILITY GROUPS
- ABILITY GROUPS

This will vary depending on the nature of the task being undertaken.

Please inform us if your child has special needs which will impact on their seating position in class. (i.e. eyesight, hearing, etc)

Homework

Reading – your child will bring home a fluency book each night. Please listen to them and help them to complete their Reading Diary. Please add a comment and focus on your child's individual targets. Please sign so your child is allowed to change their reading book.

Spellings – your child will have some spelling words to practise each week. Please support them in this task. See hand out.

Other tasks – your child will occasionally bring home other work related to their UOI. This will usually be self-explanatory or accompanied by a letter so that you can assist your child. These tasks will eventually be explained via The Beacon only.

Parents' role

Family Time

Sharing books

Talking together

Bedtime and meal times

Extra-curricular activities

Social skills and play dates

Importance of play

Helping at BHS

P.M.P.

Excursions

Helping in class

Communication

Home School Diary

Can be used for day-to-day communication between home and school.

E-mail

Teachers can be contacted via email, which they check regularly, not during school day.

Visit the school website.

General school information, weekly updates, school policies and some links to relevant websites can be accessed here.

The Beacon (VLE – Virtual Learning Environment)

Children will be able to use their username from last year. The passwords have been reset to bhs2012

Important dates

These are shared in several ways and are often in the diary.
Changes do happen and updates will be in newsletters.

Things to look out for:

Class assemblies

Friday 4th November- 2J

Friday 30th March- 2S

Friday the 17th of February -2K

Parent teacher evenings

22nd and 24th November 2011

Sharing of learning sessions

Friday 10th February 2012- Year 2 sharing

Holidays and school closure days:

Monday 11th September and Tuesday 12th September – school closed

Friday 30th September- school closed CPD

Wednesday 5th October- Chung Yeung Festival

Monday 17th to Friday 21st October- Half term holiday

Thank you!